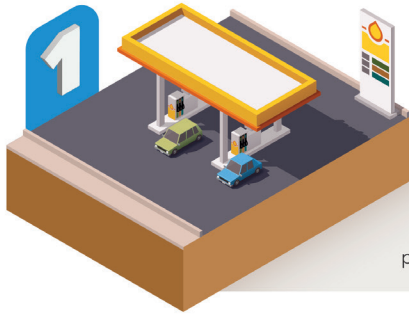




Berkeley County US EPA Brownfield Assessment Grant

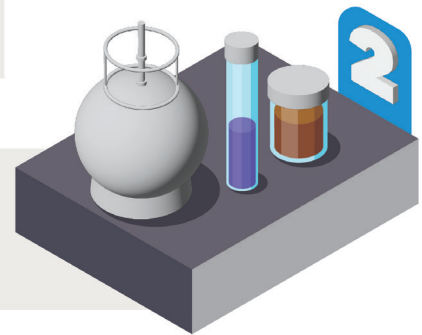
Through this grant funding, the County will be able to perform steps 1,2 & 3 for sites throughout St. Stephen.

What are the steps in the process?



Phase I Site Assessments

Gather information on the property's previous and current use. Perform a visual inspection to identify any possible contamination or concerns to the local environment.



Phase II Site Assessments

Obtain samples from the property to determine if there is contamination and to what degree.



Site Investigations

A deeper dive into the data gathered from the Phase II ESA to help determine next steps.



Site Remediation

Removal of the contamination at the property ensuring the proposed reuse is suitable for human health.



Redevelopment

Revitalization of the property for a new reuse that benefits the community.

*Steps 4 & 5 are not covered under the grant but additional resources may be available to help with remediation and redevelopment of sites.

Project Contact:
Corey McClary
Workforce Development Manager
Berkeley County Economic Development
T: 843-719-4096
corey.mcclary@berkeleycountysc.gov

Visit Our Website:
berkeleymeansbusiness.com/brownfield/

